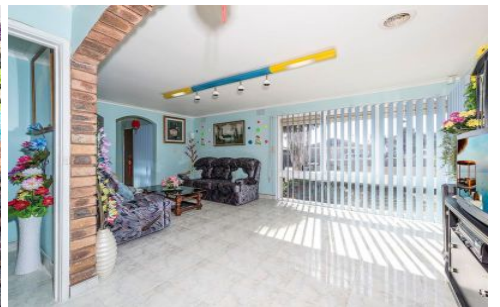




Since 2007



37 Grevillea Road KINGS PARK VIC

3 1 4

Located on corner block of approx. 536m², this very low maintenance home in Kings Park area is perfect for first home buyer or investor. Comprising of 3 good size bedrooms with built in robes, central bathroom, 1 toilet, formal lounge, open plan kitchen, meal area, plus sunroom, huge carport with remote control. Features: all gas appliances, cooling split system, roller shutter, security door, alarm system and much more.

Land Size : 536 sqm

View : <https://www.abcrealestateagent.com.au/sale/vic/west/kings-park/residential/house/5695284>