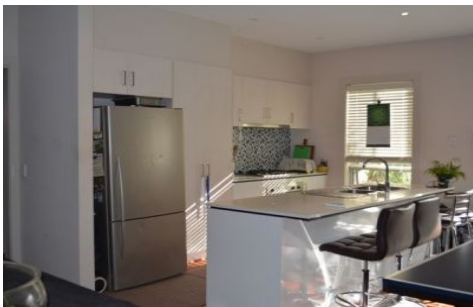




Since 2007



6 Monarma Walk KEALBA VIC

4 2 2

Perfectly situated in a prime location in Kealba facing the magnificent view of Brim bank Park only few minutes to Keilor Downs Plaza, local schools this property suit all your requirements. Comprising of four spacious bedrooms, master with full ensuite and walk in robe, all remaining bedrooms offer generous dimensions and built in mirrored robes, open living area, meals and modern kitchen with stainless steel cooker and dishwasher. Other features on offer include electric heating, split system cooling, high ceilings, alarm, remote double car garage with internal access and with landscaped gardens.

View : <https://www.abcrealestateagent.com.au/sale/vic/west/kealba/residential/house/5695298>



Peddy Telo
0412 273 752