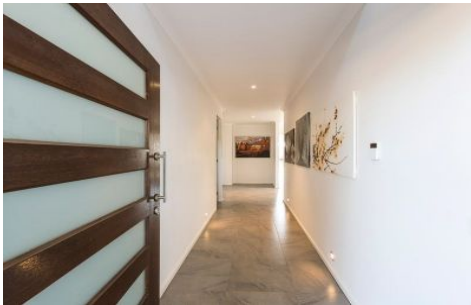




Since 2007



**9 Hovell Drive BURNSIDE HEIGHTS VIC**

4 3 2

Pamper yourself with luxury and comfort of this excellent family home can offer. Ideally located with close proximity to Watervale Shopping Centre and Caroline Springs Town Centre and local schools, this beautiful two (2) level residence comprises:

**View** : <https://www.abcrealestateagent.com.au/sale/vic/north-west/burnside-heights/residential/house/5695299>

- Four (4) bedrooms plus study and retreat
- Master bedroom with access to balcony overlooking pool, featuring
  - built in robe, with a large double vanity en-suite, spa, double size shower, toilet and bidet
- 2 other bedrooms with mirrored built in robes
- Main bathroom, separate toilet, powder room downstairs
- Modern kitchen including Caesar stone bench tops, stainless steel appliances, dishwasher and walk in pantry
- 2nd Kitchen with laminated bench tops, island bench, gas



**Peddy Telo**  
**0412 273 752**