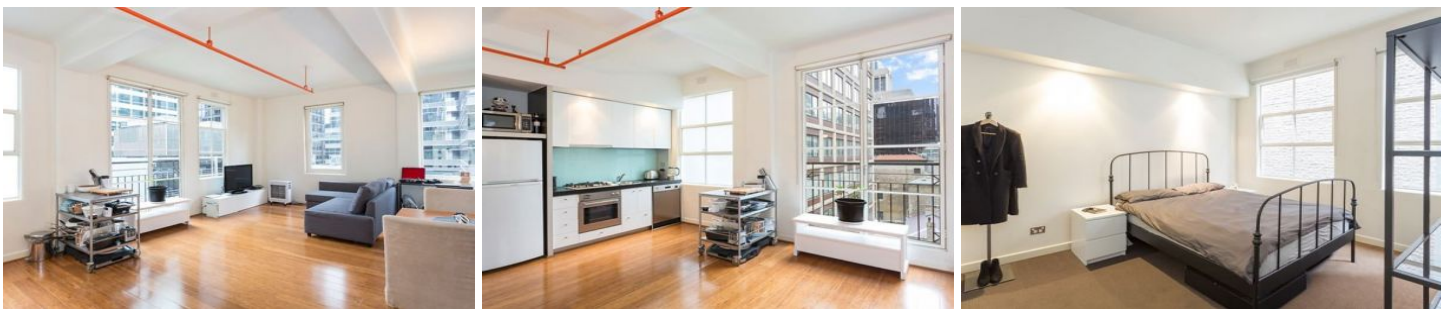




Since 2007



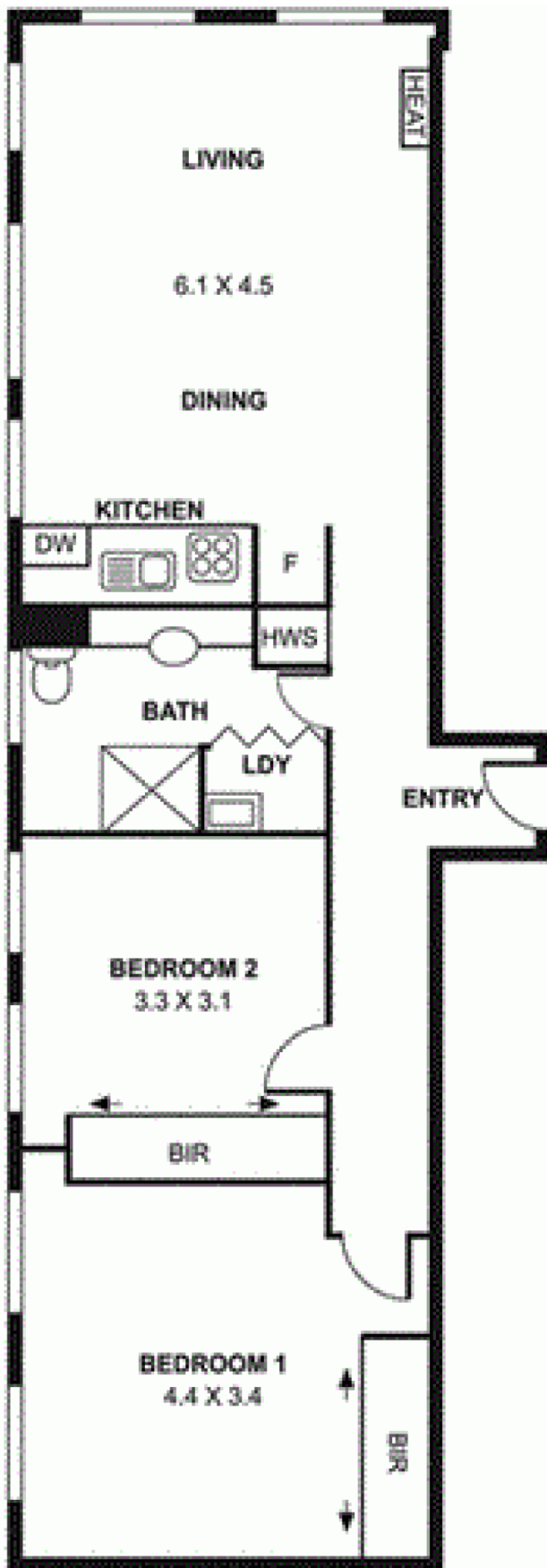
912/422 Collins Street MELBOURNE VIC

2 1

Perfectly situated in the heart of Melbourne in 912/422 Collins Street! Only minutes away from the world highly regarded universities, shopping, public transport, and close to everyday amenities such as trams at your doorstep, Southern Cross Station, Ms Collins, The Mitre Tavern, and Bistro Vue, Southbank Promenade, Crown Casino, Rialto Tower.

This two bedroom residence possesses a charming modern style with a sensational location. The rental income is \$1955 per month. A fantastic opportunity for investors and buyers, who simply looks for a city change. Inspection is a Must!

View : <https://www.abcrealestateagent.com.au/sale/vic/inner-city/melbourne/residential/apartment/5695304>



0m 2m

A horizontal scale bar with a black segment on the right and a white segment on the left. The text '0m' is at the left end and '2m' is at the right end.