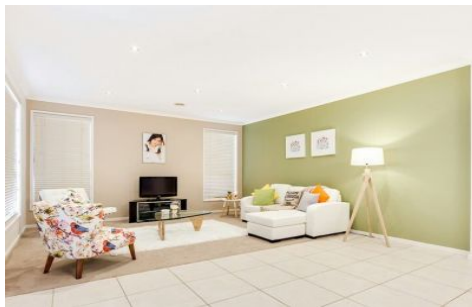
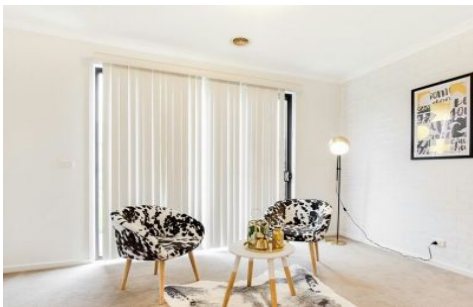




Since 2007



11 Bushlark Crescent WILLIAMS LANDING VIC

4 2 2

Nested in the premium location of Wyndham Waters, this is a great start for first home buyers and investors. Located within close walking distance to the shopping centre, Williams Landing train station, Westbourne Grammar, Kindergarten, Wyndham Waters Leisure Centre and immediate access to freeways.

This modern family home includes 4 spacious bedrooms with BIRS - the master bedroom with full ensuite and walk in robes, a bright central bathroom, a great open plan meal/kitchen area and family lounge with natural sunlight, a well design kitchen with quality stainless steel appliances, a dishwasher and granite bench tops, a view of a large backyard with fresh, greenery, low maintenance yards for front and back, extra high ceilings with stunning features, gas ducted heating and ducted cooling, a double lockup remote garage with internal and drive through access.

View : <https://www.abcrealestateagent.com.au/sale/vic/west/williams-landing/residential/house/5695308>



Diem (Dianna) Nguyen
0403 777 322