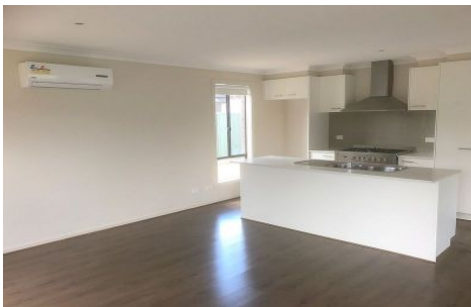




Since 2007



7 Mopane Circuit WYNDHAM VALE VIC

4 2 2

Setting on a generous 550m² (approx.) allotment in the heart of Wyndham vale - the Bluestone Estate. Locating only minutes away from Wyndham Vale Primary School, Manor Lakes College, Wyndham Vale Train Station, Wyndham Vale Square Shopping Centre, Manor Lakes Shopping Centre and local buses.

This perfect family home offers four generous sized bedrooms; the master bedrooms has its own en-suite with a vanity stone bench and walk-in robe, the remaining three bedrooms offer built-in robes, good sized formal lounge, plenty of space for a family to enjoy an open plan meals/living and kitchen, 900mm Gas appliances and stone bench, double garage with remote control, low maintenance front and back yards, and much more.

Inspection is a must!

Land Size : 550 sqm

View : <https://www.abcrealestateagent.com.au/sale/vic/west/wyndham-vale/residential/house/5695319>



Diem (Dianna) Nguyen
0403 777 322