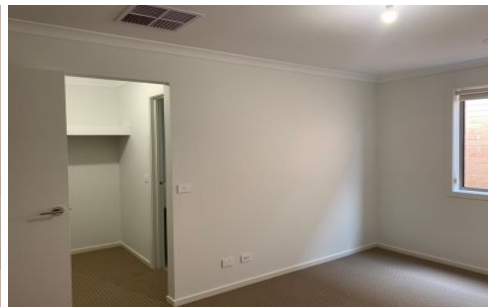




Since 2007



5 Haniper Grove Werribee VIC

3 2 2

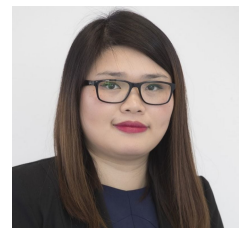
3 great size bedrooms, master with WIR & ensuite, remaining bedrooms all with BIR's; a central bathroom, open plan kitchen with gas cooking & stainless-steel appliances, double garage with remote controlled roller door and internal access, ducted heating & evaporative cooling.

Situated in the ever popular Harpley Estate surrounded by parklands and walking trails this new build will go fast so get in quick! This fabulous home is a must see!

View : <https://www.abcrealestateagent.com.au/lease/vic/west/werribee/residential/house/5695465>



Charanjit Kaur
0451617240



Hannah Chu
0411 950 493