



Since 2007



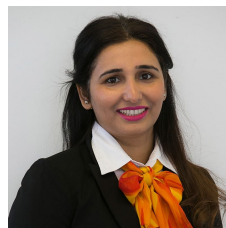
1 Atherton Way Werribee VIC

3 2 2

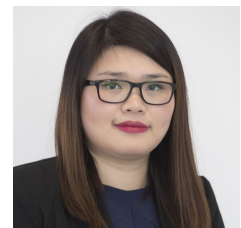
3 great size bedrooms plus study, master with WIR & ensuite, remaining bedrooms all with BIRs; 3 living areas including a living room, theatre and family lounge; a central bathroom, open plan kitchen with gas cooking & stainless-steel appliances, separate lounge, double garage with remote controlled roller door and internal access, ducted heating & evaporative cooling.

Situated in the ever popular Cornerstone Estate surrounded by parklands and walking trails this new build will go fast so get in quick! This fabulous home is a must see!

View : <https://www.abcrealestateagent.com.au/lease/vic/west/werribee/residential/house/6547546>



Charanjit Kaur
0451617240



Hannah Chu
0411 950 493

INSPECTIONS BY APPOINTMENT ONLY

<https://www.abcrealestateagent.com.au>