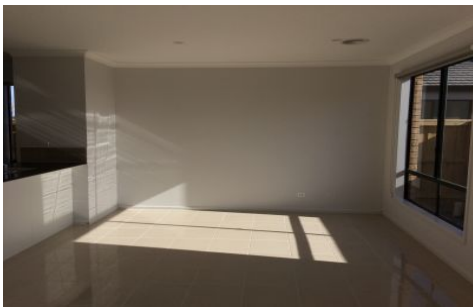




Since 2007



27 Treeve Parkway Werribee VIC

3 2 2

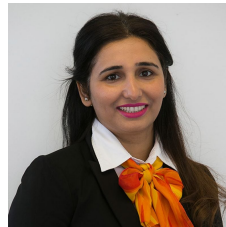
This well-presented house is bright and centrally located.

It comprises of 3 bedrooms, all with BIR's, ensuite, kitchen meal area with GAS cooking and ample cupboard space, bright spacious living and dining area, central bathroom with shower, laundry facilities and separate WC.

Other features including ducted heating throughout, air conditioning in living area and remote garage. It's close to public transport and schools.

Contact 03 9310 9374 to register your interest.

View : <https://www.abcrealestateagent.com.au/lease/vic/west/werribee/residential/house/6757097>



Charanjit Kaur
0451617240



Hannah Chu
0411 950 493