



Since 2007



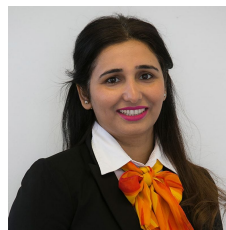
2707/245 City Road Southbank VIC

2 1

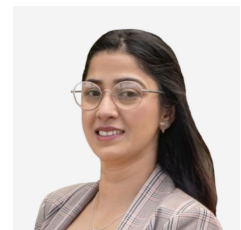
This Melbourne Apartment features high quality finishes, breathtaking views and amazing resident amenity. The Residents' Retreat on Levels 40 and 41 brings together health and wellbeing facilities with stunning bay views; including a spectacular 60-square metre pool, steam room and a large gym fitted with world-class equipment: treadmills, spin bikes and rowing machines. An easy walk around the apartment can take you to South Melbourne Market, the Arts Precinct, Boyd Community Hub, and metro Woolworths which is just on your doorstep of your building. Visiting other Melbourne iconic attractions is just as easy with a short tram ride.

Set sky-high on the 27th floor, this designer 2-bedroom corner apartment spectacularly delivers low-maintenance luxury living with high-impact result. Discover welcoming and wide-reaching open-plan living and dining with stylish

View : <https://www.abcrealestateagent.com.au/lease/vic/inner-city/southbank/residential/apartment/7791892>

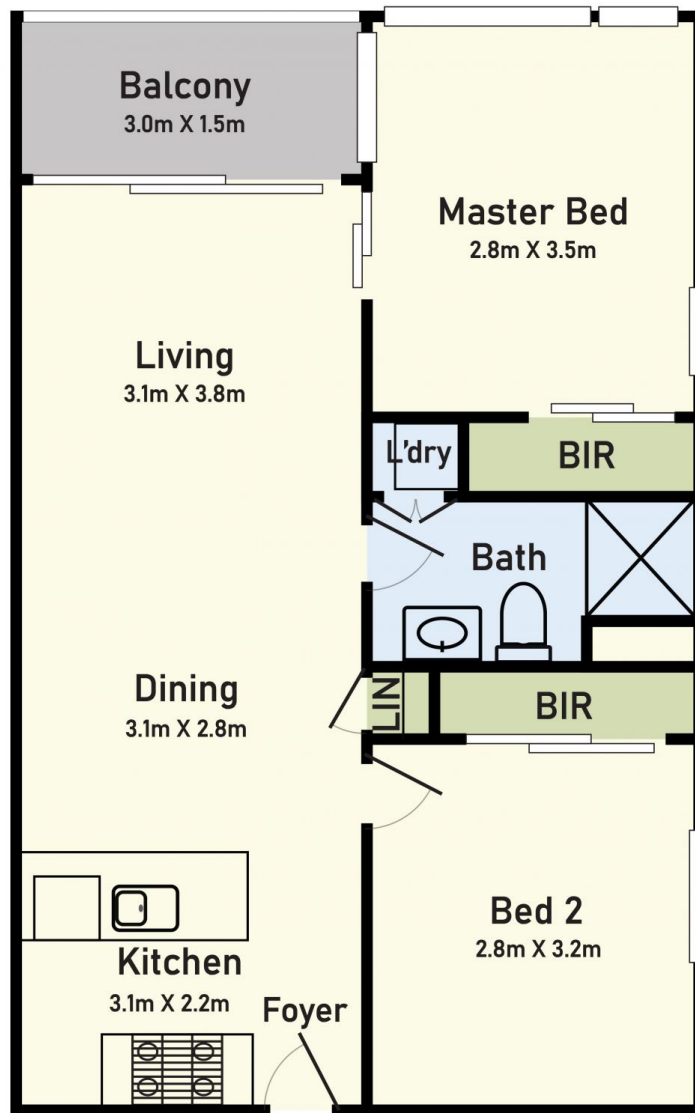


Charanjit Kaur
0451617240



Mani Kaur (Rentals)
0411950493

Floor Plan



2707/245 City Road, Southbank, VIC 3006

* Dimensions are approximate and for illustrative purposes only